

ibi™ Data Migrator

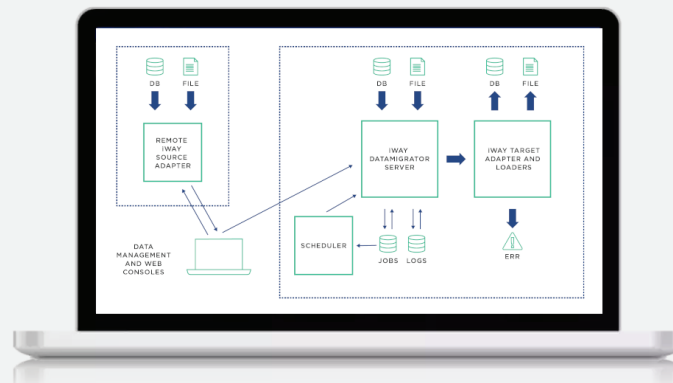
Simplify, automate, and improve your data integration efforts

ibi™ Data Migrator is part of **ibi™ Data Intelligence** - a single integrated offering that brings together diverse data management functionalities. Gain operational efficiency, reduce costs, and ensure data accuracy with our holistic solution for your data strategy.

ibi™ Data Migrator dramatically simplifies data integration. It provides fast, flexible, end-to-end extract, transform, and load (ETL) process creation involving any data structure across disparate computer platforms. Designed for building, managing, and optimizing a modern enterprise data ecosystem, ibi Data Migrator supports data access requirements associated with analytics, reporting, data management, and artificial intelligence within any environment—from the cloud to the mainframe.

Accelerate digital transformation

ibi Data Migrator supports your digital transformation initiatives by making it easy for you to access and use data from back- and front-office systems, digital platforms, and more.



The Data Management Console in ibi Data Migrator simplifies all of the major tasks required to build data flows and process flows, and create, manipulate, and access the metadata associated with those flows.

Eliminate time spent manually coding ETL processes

Optimize reporting and analytics with 100 percent WebFOCUS compatibility

Automate data management and integration efforts

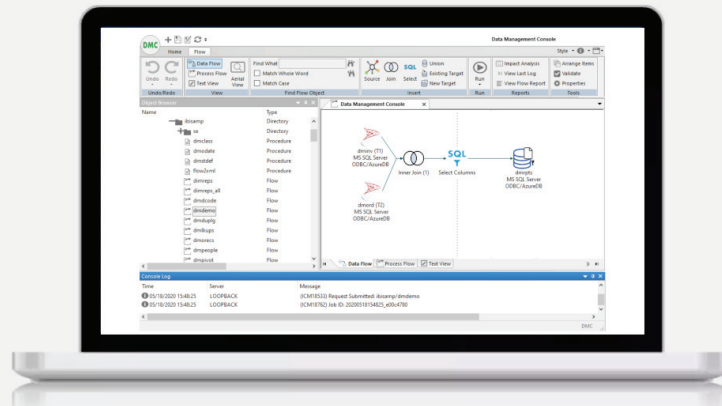
Consolidate data from multiple data sources into a single data store for easy access

ibi Data Migrator lets you:

- Aggregate, join, merge, and apply selection criteria from any combination of on-premises or cloud data sources
- Transform data to structures more suited for targeted data marts, data warehouses, and data lakes
- Simplify loading of data from source to target through data flows, process flows, or the invocation of bulk loaders
- Execute, schedule, review, manage, audit, and create dependencies from the console on Windows or any web browser

Access and join any data—anywhere

ibi Data Migrator provides great reach and range by employing iWay adapters to provide seamless high performance access to virtually any enterprise, cloud, or big data source. These include relational databases; files in XML, JSON, delimited, and other formats; RESTful Web Services; ERP and cloud-based systems—Redshift, Azure, Snowflake, and AWS S3 storage; and Hadoop data sources and NoSQL databases. It leverages any ODBC or JDBC driver for additional data access.



Extract, transform, and load your data with ibi Data Migrator

Product features

ibi Data Migrator's easy-to-use workbench streamlines and accelerates the creation and execution of ETL jobs.

Features include:

- **Data Profiling** provides analytics for individual columns or entire tables. It shows the number of rows, unique rows, patterns, and nulls. Drill-down reports show the unique values and patterns for alphanumeric columns and outliers for numeric columns
- **Data Flow Designer** allows visual creation of joins, rapid table and column searches, dynamic error notification, and real-time request testing
- **Process Flow Designer** simplifies the design of complex jobs,

Glossary of terms

ERP: Enterprise Resource Planning

ETL: Extract, Transform, and Load

JDBC: Java Database Connectivity

JSON: JavaScript Object Notation

ODBC: Open Database Connectivity

XML: Extensible Markup Language

The ibi™ Data Intelligence Difference

Data Intelligence brings together the power of ibi solutions to create a unified end-to-end data management solution. Now, you can support your entire lifecycle of data and analytics projects and deliver business value from a single solution. Because our broad set of capabilities are integrated and unified, you will benefit from cost savings, increased productivity and efficiencies, and the ability to scale your data management operations. Upgrade to ibi™ Data Intelligence to modernize your data management strategy.

such as building large data warehouses with intricate load requirements, with a graphical tool. Users can fully control the execution of ETL requests based on a schedule defined by the administrator or dependent on the success or failure of previously executed requests

- **Data Management Console** lets administrators and users easily review job statistics and drill down into job logs, review the job queue, start and stop servers and server processes, schedule jobs and configure email nodes, manage adapters and metadata, administer application directories, and create and edit scripts and user exits
- **Change Data Capture (CDC)** transfers only changed records (inserted, updated, or deleted), increasing labor efficiency by requiring only a single data flow to be composed to handle both initial load and delta processing. This dramatically reduces processing time and CPU cycles and improves the timeliness of data moving into the data store. It supports all major relational databases (VSAM, DB2 on LUW, zOS and IBM i, ORACLE, MS SQL Server Enterprise, MySQL, MariaDB, and PostgreSQL)
- **Support for Star Schemas and Slowly Changing Dimensions** helps to identify the usage of each column in a dimension table, surrogate and natural keys, current flag and/or begin/end dates, and Type I or Type II processing. A process flow can load dimension tables in parallel followed by the fact table load
- **Data Source Transparency** makes all sources accessed by the servers on your network appear as a set of relational tables, easing cross-platform, multiple-database extractions and joins even for legacy, cube, and other non-relational data

Native Integration with ibi WebFOCUS

ibi Data Migrator natively integrates with the ibi™ WebFOCUS® analytics platform—using them together increases utility in data model creation, metadata construction, data lineage, impact analysis, and business view creation. It enables organizations to leverage and reuse SQL created with other products and to embed data flows easily. You can also reuse business logic across the product to reduce redundancy and cost, while increasing the productivity of ETL developers.

ibi Data Migrator uses the same metadata layer as WebFOCUS, with tight integration and coupling, making it easier and more cost-effective to create, extend, and maintain data warehouses than with other ETL vendors. If you are already using ibi WebFOCUS, ibi Data Migrator enables you to optimize your reporting and analytics environment and add new data sources with ease.



Global Headquarters
851 W Cypress Creek Rd.
Fort Lauderdale
FL 33309
+1 650-846-1000 TEL
+1 800-420-8450
+1 650-846-1005 FAX
www.ibi.com

ibi delivers a modern data and analytics software platform that helps organizations harness the power of data to drive informed decision making. Fuel your digital transformation with data management and business intelligence capabilities to support large-scale deployments with embedded analytics and enterprise reporting built for cloud and hybrid environments and backed by deep industry expertise.

©2023 Cloud Software Group, Inc. All rights reserved. Information Builders and the Information Builders logo are trademarks or registered trademarks of Cloud Software Group, Inc. or its subsidiaries in the United States and/or other countries. All other product and company names and marks in this document are the property of their respective owners and mentioned for identification purposes only.
21Feb2023