

# ibi™ WebFOCUS® Business Intelligence and Analytics Platform

## Benefits

### Powerful discovery and creation:

Explore, create, analyze, publish, and collaborate on analytics content

### Seamless distribution:

Share and distribute fully customizable analytics at scale

### Flexible, connected, embedded capabilities:

Easily connect to any data source, and deploy to tens of thousands of users and thousands of apps

### Make WebFOCUS your own:

Using the new White Labeling feature, easily brand WebFOCUS as your own

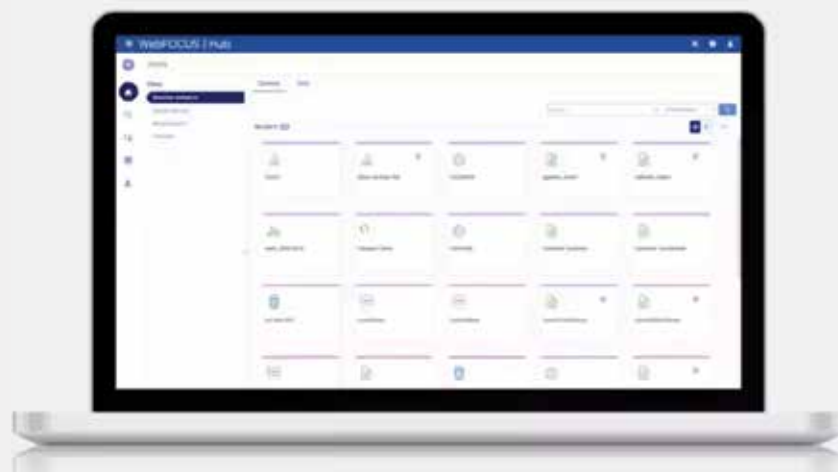
## A responsive experience for your organization

The WebFOCUS platform's latest developments have been centered around creating an immersive and responsive experience for users.

The WebFOCUS® Hub start page does just this, allowing users to access the page across every type of device, to then navigate to all areas and capabilities of the platform. Individual users are now in control of their experience, with the ability to manage and organize their content the way they want and need for their day-to-day operations, with additional sharing capabilities, promoting a collaborative and highly productive culture, all from a unified start place, the Hub.

The addition of Document Mode in WebFOCUS® Designer makes it easy to create customized layouts within multi-page documents using any combination of charts, reports, images, and text boxes. Documents can be generated and distributed as PDF files or HTML pages, making it easy to access key information on the go.

The new White Labeling feature allows users to seamlessly change the color palette, logos, and more all from the WebFOCUS Hub—easily transforming WebFOCUS to match your organization's branding with the click of a button.



## Power your data-driven culture with intelligence for all

Incorporating over 45 years' experience working with countless BI clients, the ibi™ WebFOCUS® analytics platform enables superior visualization, at-your-fingertips insights generation, and democratized access to data.

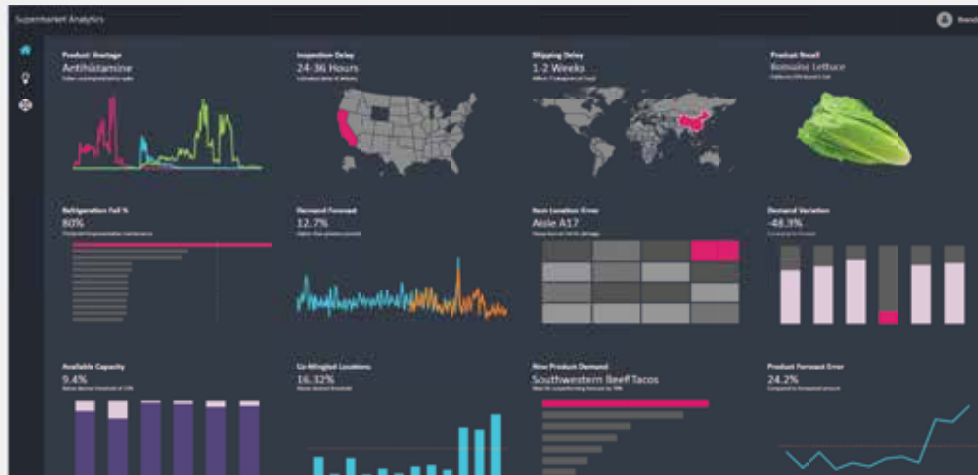
The goal is to help you achieve business results by harnessing the power of your data for informed decision-making.

If you're looking for self-service analytics with enterprise power, the WebFOCUS® platform is it. Access all your data faster without having to sacrifice a trusted data foundation for amazing visuals—plus, get robust reporting that illuminates business opportunities.

We've designed our modern state-of-the-art analytics platform for users who need to create, publish, share, and collaborate on analytics content quickly to get results.

## Tell a stronger data story through visualization and reporting

Bring data to decisions across your organization with tools designed to drive insights and supercharge collaboration at scale. An intuitive, immersive experience invites new users to begin creating dashboards and reports in minutes. This same platform empowers data scientists, developers, and administrators to leverage powerful capabilities to manipulate and transform data within an unparalleled data prep and governance foundation.



*The WebFOCUS® platform enables and empowers all types of users to discover, create, and share their data and analytics journey, enabling informed decision-making across the organization.*

With fully responsive templates, reports, charts, maps, and Controls, WebFOCUS® analytics increases the speed and ease of asset authoring and assembly. Empower your organization to make sound strategic decisions by employing real-time, customized, self-service analytics in every aspect of your business.

## Unlock data science for all with AI powered insights

Augmented analytics—the ability to incorporate machine learning and artificial intelligence (AI) into business intelligence (BI)—is transformative, automating steps from data prep through insight discovery. The solution's Instant Insights feature with automated narratives and trends and seasonality change exposures does the work for you, explaining signals and trends in data without requiring manual effort or coding. Our AI engine gives business analysts and developers the power to run advanced analysis to get to the heart of the data story quickly and spend more time driving business outcomes. Coupled with Natural Language Query, users can now start building reports without using authoring tools—and ask business questions and get answers in the form of charts for visualization—to make informed and fast decisions.

## Share analytics seamlessly to foster a data-driven culture of collaboration

Achieve limitless, fully customized distribution of your analytics—getting the right data to the right people based on complex business logic. Easily distribute interactive reports and dashboards to an unlimited number of recipients, whether partners, employees, or customers. Plus, with the Analytics Anywhere feature, recipients don't even need to connect to a server to explore data using filters, calculations, roll-ups, or pivot capabilities. All they need is a browser.



*Flexible deployment and scalability unlocks automated access and easy collaboration for teams.*

## Distribute boardroom quality reports and consumer facing apps to countless stakeholders

The WebFOCUS® platform enables users to distribute boardroom quality documents, financial reports, and fact sheets in a wide range of formats, reducing compatibility issues for creators and consumers. With the WebFOCUS® solution, you can deploy applications to more than 25 million consumers. In addition, the powerful technology makes it easy to build highly parameterized applications that mimic the usability and workflow of popular consumer applications. WebFOCUS® software functions independently of a server, making it portable and modular so users can work with data without needing an external application.

## Seamlessly embed superior analytics into your business and applications

Enterprises and OEMs scaling to any number of end users can embed the WebFOCUS® platform and components with total flexibility. The new White Labeling feature allows for a unified user experience when embedding your WebFOCUS deployment into another application, saving your organization time and money that would otherwise be spent on developing a similar platform in house. We prioritize seamless use for all with no separate sign-ons, just one center of truth for all data. Unlock better automated access for teams with flexible deployment and scalability. Customized experiences let your team and customers share data broadly and use it most efficiently. Our partners leverage ibi™ building blocks for monetization opportunities that drive growth, diversified revenue models, and increased customer engagement—all while maintaining focus on their core strengths, leaving specialized development to us.



*Embed data and analytics into your products and services with total flexibility and deliver seamless, superior customer experiences.*

## Deploy quickly, any way you want

WebFOCUS® deployment prioritizes security, reliability, scalability, and flexibility. Whether you want to leverage all the benefits of the ibi™ WebFOCUS® Cloud, or manage your own cloud deployment with the ibi™ WebFOCUS® Container Edition, scale the capacity of WebFOCUS® like never before with Dynamic Scaling.

Dynamic Scaling allows customers to automatically scale in response to changing demands for a more economical and efficient use of WebFOCUS® and the cloud environment of your choice. Through containerization, ibi™ supports your cloud journey by running WebFOCUS® on any cloud with faster-than-ever deployment. WebFOCUS® supports increasing workloads and ensures scalability, promoting a high productivity culture throughout the enterprise, allowing business continuity through any period with enhanced security. ibi™ products and services deliver leading-edge capabilities to power growth through better data and analytics.

**Learn more about ibi™ WebFOCUS®, and how we enable the world's largest enterprises to migrate to the cloud and harness the power of data to drive informed decision-making across their organizations. [www.ibi.com](http://www.ibi.com)**



**Global Headquarters**  
851 W Cypress Creek Rd.  
Fort Lauderdale  
FL 33309  
+1 650-846-1000 TEL  
+1 800-420-8450  
+1 650-846-1005 FAX  
[www.ibi.com](http://www.ibi.com)

ibi delivers a modern data and analytics software platform that helps organizations harness the power of data to drive informed decision making. Fuel your digital transformation with data management and business intelligence capabilities to support large-scale deployments with embedded analytics and enterprise reporting built for cloud and hybrid environments and backed by deep industry expertise.

©2023 Cloud Software Group, Inc. All rights reserved. Information Builders and the Information Builders logo are trademarks or registered trademarks of Cloud Software Group, Inc. or its subsidiaries in the United States and/or other countries. All other product and company names and marks in this document are the property of their respective owners and mentioned for identification purposes only.  
06Apr2023